

Designed by *engineers*, for *engineers*.



CONTACTS FOR WASHINGTON OFFICE:

Tom Spowart
tspowart@delval.com
 (412) 491-2479

Randy Stanger
rstanger@delval.com
 (412) 337-2620



Commercial Tankless Water Heaters



Intellihot

Hubbell
 WATER HEATERS

Throughout the world, on land and on sea, Hubbell water heaters provide hot water for nearly every application imaginable.

ELECTRIC LOW/HIGH CAPACITY



Small Capacity

- 6 - 120 gallons
- Up to 6 KW in all single phase voltages
- Tank linings available in cement, steel or copper alloy



High Capacity

- Up to 5,000 gallons
- Any KW & voltage
- Tank linings available in cement, steel or copper alloy



Horizontal, Ceiling Hung

- 20 or 30 gallons
- Up to 20 KW in all
- 1 or 3 phase voltages
- Cement lined steel tank



Point-of-Use

- 1 or 2.5 gallons
- 450 Watts to 3KW
- 120V, 208V, 240V, 277V, single phase
- Stainless steel tank



Tankless Commercial

- Available up to 62 KW
- 208 thru 600 Volt 50/60 Hz
- 1 or 3 phase voltages
- Stainless steel brushed finish

GAS



Gas Storage Heater

- 65 - 120 gallons
- Long Lasting Cement Lining
- Fully integrated burner and stainless steel heat exchanger
- Condensing up to 55k BTU input



High Efficiency Gas Water Heater

- ASME construction
- Up to 8:1 turn-down
- Cascadable
- Condensing with inputs 200 - 800 MBH

STEAM, BOILER WATER



Semi-Instantaneous (Steam)

- Can provide recoveries up to 10,500 GPH
- Fully packaged with all controls
- For high-demand applications



Small Capacity (Steam)

- Up to 120 gallons
- Steam operating controls factory supplied
- Cement lined steel tank
- For low-demand applications



High Capacity

- Up to 5,000 gallons
- ASME stamped
- Utilizes low temperature boiler water



Instantaneous

- Full range of recoveries
- ASME stamped
- Utilizes low temperature boiler water
- For high-demand applications



SPECIAL PURPOSE

Tepid Water Heater

- Fully packaged water heating system
- Designed for tepid water delivery to a safety shower and/or eye wash
- Designed mixing valve for emergency use



Delval Equipment Corporation
 295 Meadowslands Blvd.
 Washington, PA 15301
 P: 724.743.0410

www.delval.com

rstanger@delval.com

tspowart@delval.com





THE MIFAB ADVANTAGE

IN STOCK AND READY TO SHIP!

PINNACLE SALES
 Phone: 800-253-7010
 Email: sales@pinnacle reps.com
 WWW.PINNACLEREPS.COM



QUICK HUB COUPLINGS:
 NO NEED TO SEPARATE THE GASKET FROM THE SHIELD - INSTALLATION READY. JUST PUSH ON THE PIPE!



GRP TRENCH:
 RIGID LIKE POLYMER CONCRETE BUT NOT FRAGILE. COMPETITORS MAXIMUM TEMPERATURE AT 140°F. OUR MAXIMUM TEMPERATURE AT 212°F!



TOP SET STRAINERS:
 BRING THE STRAINER TO GRADE WITHOUT REMOVING THE GRATE AFTER THE CONCRETE POUR. JUST TURN THE THREE PHILLIPS HEAD SCREWS!



RPZ AND DC BACKFLOW:
 ACCESS BOTH CHECKS FROM ONE ACCESS POINT. ALL STAINLESS STEEL BODY AND SHORTEST LAY LENGTH!



SIPHONIC DRAINAGE:
 PIPES ARE FLUSHED AT HIGH VELOCITY AND SELF-CLEAN AS AIR EXITS THE SYSTEM. PIPE DIAMETER & MATERIALS ARE REDUCED BY HALF!



HDPE INTERCEPTORS:
 LIFETIME WARRANTY. GENERIC CUT TO FIT ADS RISERS. PDI AND ASME APPROVED!

WWW.MIFAB.COM



T&S IS HERE >

T&S is proud to be a trusted name across a wide range of markets — staying at the forefront of today's evolving industry and providing a vast selection of reliable solutions that meet required codes and compliances.

Learn more at tsbrass.com/markets.



Find us in
MASTERSPEC
 building specs done right



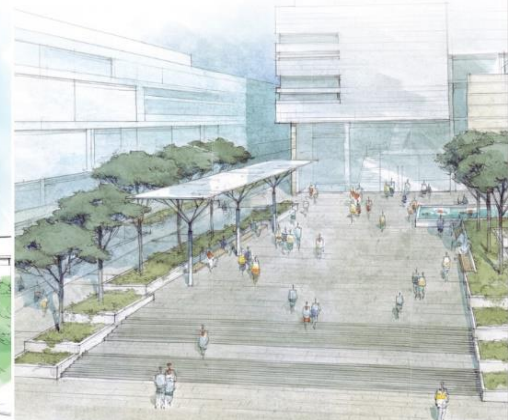
EDUCATION



PUBLIC VENUES



HEALTHCARE



COMMERCIAL OFFICES

VIEGA VALVES

**MORE SIZES.
MORE MATERIALS.**

The leader in pressing just got bigger. That means all Viega connections on your upcoming jobs. Who doesn't like the sound of that?

Dan Sabetta
Technical Manager – Great Lakes Region



SCAN
WITH PHONE
TO CONTACT



PROUDLY PROVIDING
THERMOSTATIC BALANCING SOLUTIONS
FOR OVER 10 YEARS

Hot Water Recirculation



In 2012, CircuitSolver® was developed to conquer the challenges inherent to conventional manual balancing valves. As the market's first **thermostatic balancing valves** used for domestic hot water recirculation, CircuitSolver® balances a system based solely on temperature as opposed to pressure or flow to guarantee hot water at **every fixture**. Dynamically balancing a system, CircuitSolver® ultimately **ended complaints** about the lack of hot water, and eliminated balancing processes and callbacks.

Cold Water Recirculation



Last year, we implemented our thermal actuator technology into the CircuitSolver® Union Cold Water balancing valves. These valves are installed in domestic Cold Water recirculation systems to mitigate the risk of Legionella and other bacterial growth. Cold water recirculation is becoming more prominent in hospitals to reduce water stagnation and ensure residual chlorine is distributed but can be beneficial to any commercial building that could experience periods of low flow or non-use.



NOW,
ALL YOU NEED
IS ONE.



Introducing one pump that replaces 70.

Bell & Gossett solves for simplicity with the ecocirc® 20-18 and ecocirc+ 20-18 variable speed ECM smart circulator.

It's the only pump you need for multiple jobs, helping you travel lighter, smarter and less often. Try this versatile heating, cooling and potable water solution on for size: easy-to-install, simple-to-use.

Learn more at bellgossett.com/ecocirc2018.

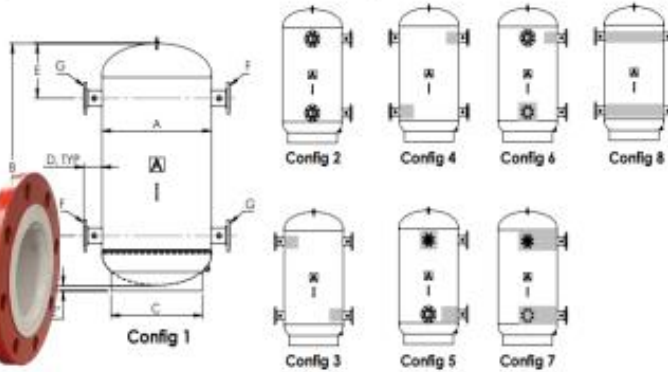


SINCE 1908
wessels
company

SUBMITTAL

WMT-SERIES
Multi-Purpose Hydronic
Accessory Tank

Models: WMT-50 to WMT-1040
Submital Sheet No. J-1008A Rev. 3/22/2023



Dimensions & Weights:

Model Number	Dimensions in Inches							Approx. Shipping Weight (lbs)
	A	B	C	D	E	(F)	(G)	
WMT-50	18	60	12	See Note 4	9.5/16	2.3.4	2.3.4	56
WMT-60	20	48	14		10.3/8	2.3.4	2.3.4	52
WMT-75	24	40	20		10.3/8	2.3.4	2.3.4	74
WMT-100	24	40	20		12.1/2	2.3.4	2.3.4	80
WMT-150	30	34	24		14.1/2	2.3.4	2.3.4	125
WMT-200	30	34	27		1.8	3.4.6	3.4.6	125
WMT-350	36	32	30		18.1/2	4.4.8	4.4.8	215
WMT-400	36	38	30		17.1/2	4.4.8	4.4.8	460
WMT-500	42	30	36		19.1/2	4.4.8	4.4.8	577
WMT-700	48	30	42		20.3/8	4.4.8	4.4.8	850
WMT-850	54	38	48	22.3/4	4.4.8	4.4.8	1038	
WMT-1040	60	36	54	24.3/4	4.8.10	4.8.10	2490	

Model Example
WMT-50-22-1

(a) (F)(G)(b)

(a) Gallon Size

Connection Size:

(F) Primary Zone

(G) Secondary Zone

(b) Configuration

Notes:

- Inspection openings will be provided as required by ASME code.
- Insulation, Trim Package, and WesMag are optional.
- Dimensions shown are subject to change and should not be used for pre-piping. Weights are based on max flange connection. Contact your local Wessels representative is certified dimensional drawings are required.
- For connections 3/4" and below, the 'D' dimension is 4". For connections 1/2" and above, the 'D' dimension is 6".



101 Tank Street Greenwood, IN 46143

Ph: 317-888-9800 Fax: 317-888-9988



Chapter President's Report

By: Michael Finnigan, CPDT

Hello fellow ASPE members! It's hard to believe that it is June already! Baseball season has started up and I for one am looking forward to the sunny days ahead!! Last month (May) we had some scheduling conflicts so this month on June 19th, it will be our last meeting until September.

Thank you to all the members who attended last month's meeting, and a big thank you to Cameron Baucom for April's presentation on Value Engineering in Construction. If you have any questions in regards to the presentation, please feel free to reach out to Cameron via email: cbaucom@charlottepipe.com.

This month's meeting will be the last until September 2024 and we will be welcoming Alex Dirienzo from Highland Tank as he will be presenting on Oil/Water Separators. The chapter board members will also be discussing some future things including leadership roles, future events, and the plan forward for the chapter, so feel free to come out and share some ideas you have! It is highly encouraged that ALL members of the board be present for this meeting. The meeting will be held on Wednesday, June 19th at Rizzo's Restaurant in Windber, PA – Please see our website for registration www.johnstwnaspe.org. The cost is \$25.00 for cash/check or \$30.00 for Credit – paid at the venue.

The evening will consist of our normal Social Hour from 5:00 - 6:00 and then move onto food, followed by the chapter officer discussion and then the presentation.

The ASPE/ASHRAE Bowling Tournament was a HUGE success. I would like to thank all the teams and sponsors that we had:

Teams: Iron Mountain Data Centers, Tobey Karg, Pittsburgh Air Team (2 teams), CS&E, Delval, J.A. Deken Sales, V-Systems, Pyramid Engineering, and Pittsburgh Chapter of ASPE

Food Sponsor: Lixil

Beverage Sponsors: CS&E and Pittsburgh Air

Shoe Sponsors: East Hills Engineering Associates and J.A. Deken Sales

Prize Sponsors: Midwest Spec and Tobey Karg

This year we celebrate a milestone for the Johnstown Chapter of ASPE Golf Outing as it will be the 25th Annual Outing. The outing has been officially booked for Monday August 5th at Windber Country Club. A flyer will be sent out in the next few weeks with all the registration information, so please keep an eye out for that.

The Region 2 Presidents meeting will be held in Dayton, OH on June 14-15, 2024 – if you have any comments or concerns, please bring up to a Board member to pass along to those who will be attending. The ASPE Convention is scheduled for October 18th-23rd 2024 in Columbus – Society will be sending out more information, keep up to date on the ASPE website.

We have openings for the upcoming 2024-2025 meetings, if you have an idea or are interested in giving a presentation, please contact Mike Stiles, Johnstown Chapter VP Tech and communicate with him so we can get you scheduled.

Thanks,

Michael Finnigan, CPD
ASPE Johnstown Chapter President



Chapter Vice President Tech Report

By: **Michael Stiles, CPD**

The spring weather has been good lately and it is looking like it is going to be a great summer. The Johnstown Chapter continues in its efforts to gain members and get them involved, interested and educated. Checkout all the upcoming chapter events and activities. The June meeting has been arranged and is scheduled to take place at Rizzo's on Wednesday, June 19th.

Last months meeting featured Mr. Cameron Baucom with his presentation on Value Engineering in Construction. The presentation provided a detailed outline of value engineering strategies. We thank Cameron and we thank you all for your support, participation and contributions to the chapter functions.

This month we will be welcoming Alex Dirienzo from Highland Tank as he will be presenting on Oil/Water Separators. The chapter board members will also be discussing some future things including leadership roles, future events, and the plan forward for the chapter, so feel free to come out and share some ideas you have! It is highly encouraged that ALL members of the board be present for this meeting

The Region 2 Presidents meeting will be held in Dayton, OH on June 14-15, 2024 – if you have any comments or concerns, please bring up to a Board member to pass along to those who will be attending. The ASPE Convention is scheduled for October 18th-23rd 2024 in Columbus – Society will be sending out more information, keep up to date on the ASPE website.

We always have openings for the upcoming meetings, if you have an idea or are interested in giving a presentation, please contact me and I will get you scheduled.

Thank you,

Michael Stiles, CPD
ASPE Johnstown Chapter Vice President Technical

Johnstown Chapter American Society of Plumbing Engineers Newsletter Advertisement Form

Name: _____

Business / Company Name: _____

Address: _____ State: _____ Zip code: _____

Business Telephone: _____ Fax: _____

Email Address: _____

No. of Publications		Business Card \$5.00/Month \$40.00/Year	¼ Page \$10/Month \$80/Year	½ Page \$20/Month \$160/Year	Full Page \$40/Month \$320/Year
Months	Year				
Total Due:					

Total amount enclosed: _____

Check box if a receipt is required.

Please enclose a clear production of the advertisement at the size selected. A reproducible-quality replica of the specified advertisement will ensure clarity upon the printing of the newsletter.

Please mail completed forms to: Johnstown Chapter of ASPE
 541 Main Street
 Windber, PA 15963
 Attn: MARIAH EHRHART OR EMAIL AT MariahE@easthillseng.com

JAMES F. SPINELLI, CPD
Newsletter Editor and
Johnstown Chapter Ambassador

ASPE News

A stylized illustration of a summer beach scene. The background is a light blue sky with a large white sun. Two palm trees are on either side of the sun. In the foreground, there is a sandy beach with a white and orange striped beach ball, a large orange beach umbrella, and a white surfboard with orange stripes. The ocean is represented by blue waves.

SUMMER TIME

Here is where your presentation
begins